

# PRODUCT KNOWLEDGE INFORMATION SHEETS



## ***47LRC SERIES FEATURES***



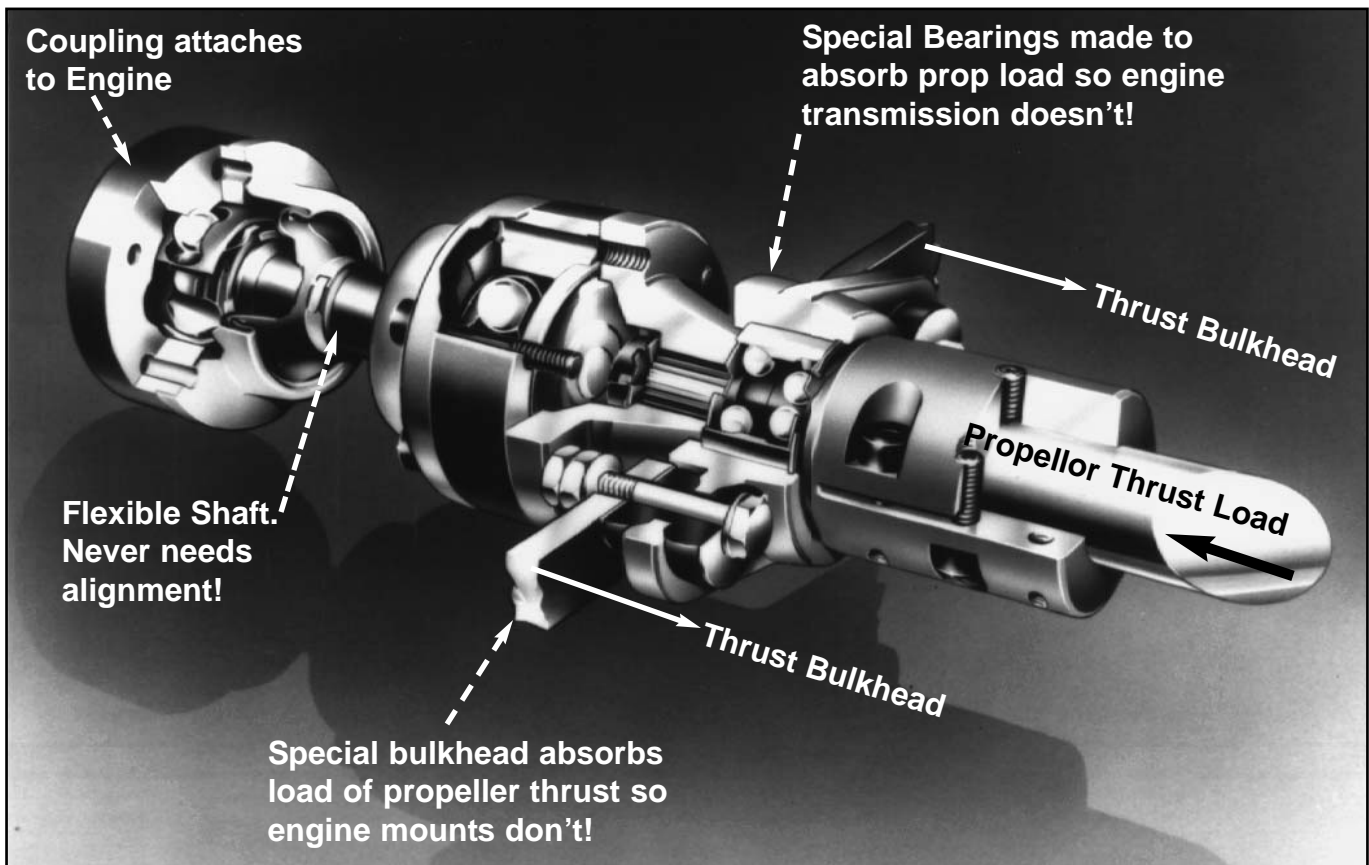
Caliber Yachts, Inc. reserves the right to modify or change these features, drawings, diagrams, written copy, etc., without notice. Caliber Yachts, Inc. will in no way whatsoever be responsible for the use of these product sheets for any purposes. Caliber Yachts, Inc. does not guarantee the accuracy of any drawings, diagrams, statements, figures, photos, graphics, etc. All drawings, statements, figures, graphics, etc. are not deemed to represent any set standards and in no way whatsoever do so. All drawings, diagrams, written copy, figures, etc. are general representations of the LRC line and do not necessarily represent, or portend to do so, any particular features of any individual product. Any or All Features may be changed at any time without notice.

# PRODUCT KNOWLEDGE INFORMATION SHEET

**Question:** What is the "Aquadrive Anti-Vibration System™"?

**Answer:** A special coupling and a thrust bulkhead absorbs the entire thrust of the propeller load. This allows the engine mounts to dedicate 100% of their energy for reducing engine vibration. They do not have to absorb propeller thrust loads. An additional benefit is, engine alignment is totally eliminated by using this system.

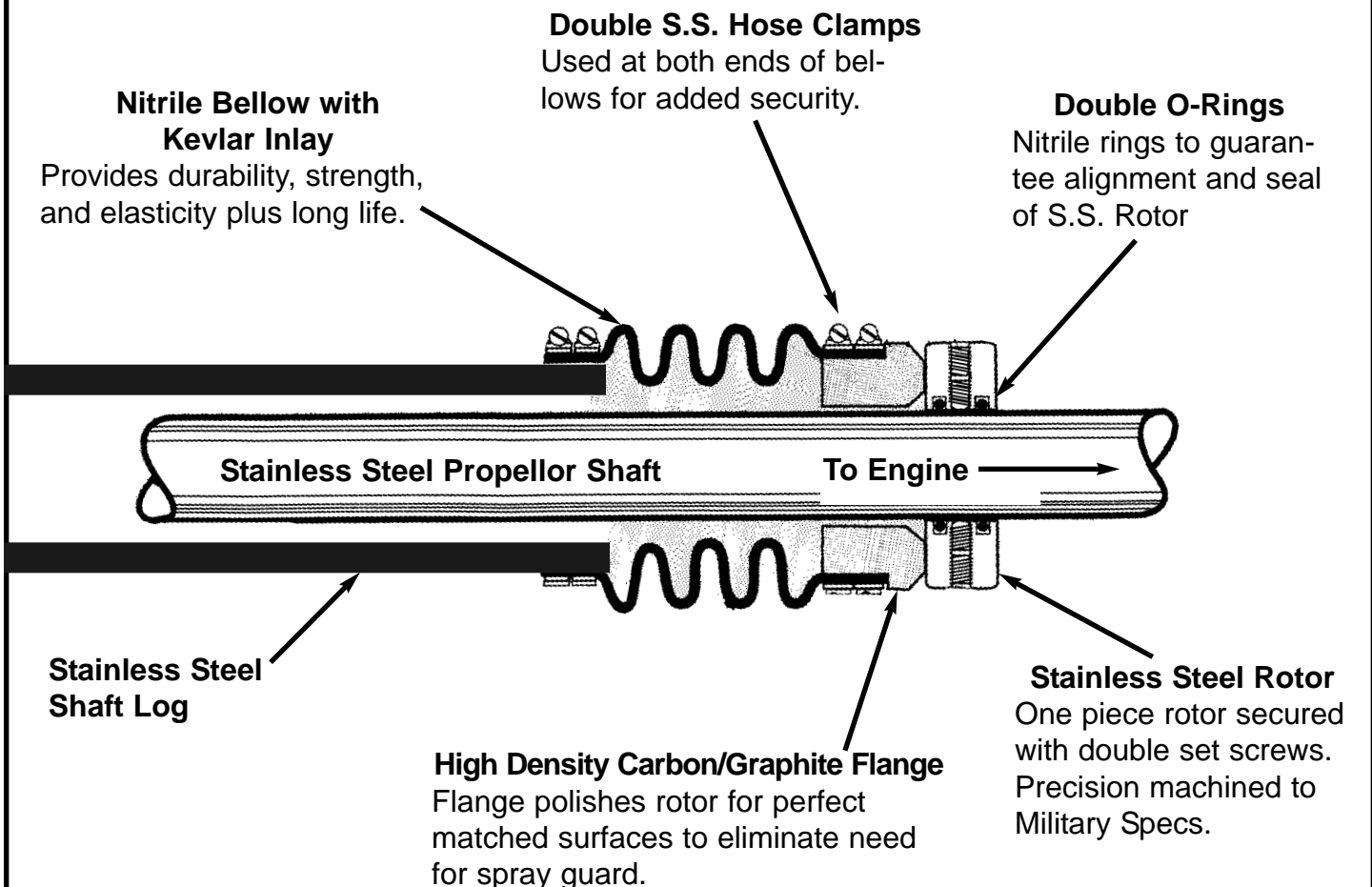
## Aquadrive Anti-Vibration System™



**Question:** What is a *Dripless Shaft Seal*?

**Answer:** A special propeller shaft gland made to operate under drip-free conditions. It is 100% watertight so there is no seawater dripping into the bilges. Your bilges stay dry. Plus it's maintenance free.

## Dripless Shaft Seal



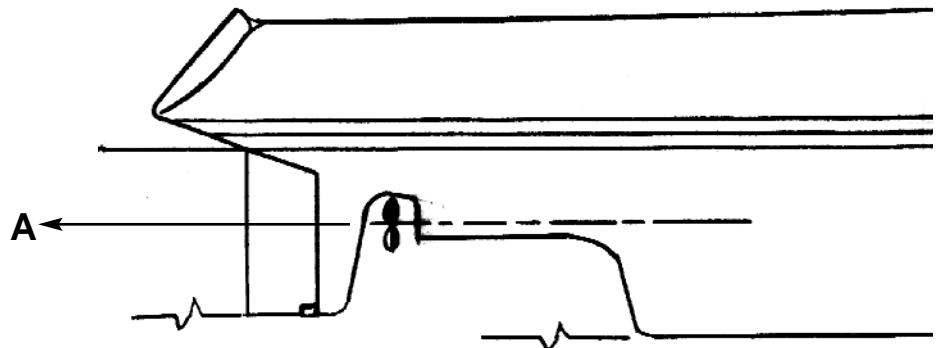
**Question:** What is the advantage of the Caliber 47LRC having a perfectly *Horizontal Propeller Thrust*?

**Answer:** Since the thrust of the propeller is what drives the hull through the water, the more horizontal it is, the more efficient it becomes. Any vertical motion of thrust is wasted energy.

## Horizontal Propeller Thrust

### Horizontal Shaft Angle

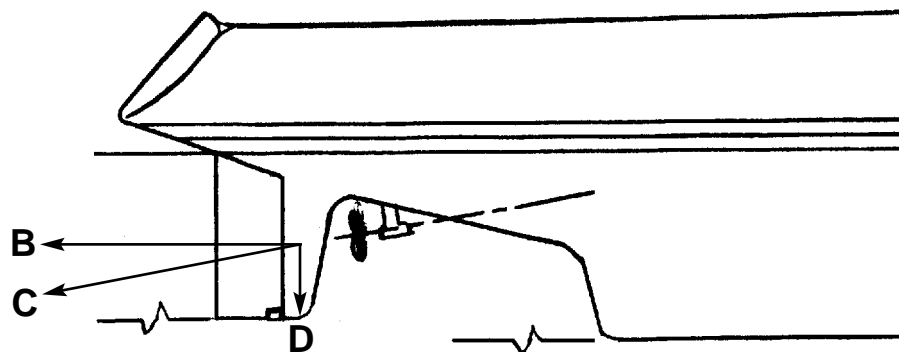
In the Caliber 47LRC the engine has been carefully designed and engineered into a perfectly horizontal position. This means that the entire Engine Thrust (A) is used efficiently to push the hull forward with no wasted vertical thrust component.



*With exact same engine power thrust A is greater than thrust B.*

### Downward Shaft Angle

In a design with a high angle of downward shaft angle, the Engine Thrust (C) is broken down into two components. Wasted energy in the Vertical Thrust (D) results in a less than efficient forward Horizontal Thrust (B).

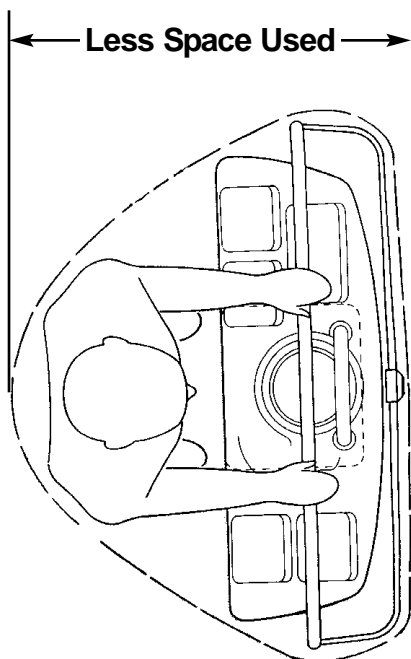


# PRODUCT KNOWLEDGE INFORMATION SHEET

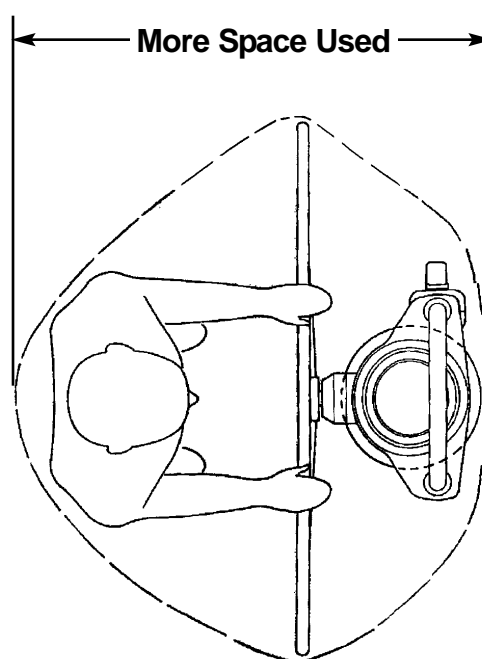
**Question:** How does the *Premiere Constellation Pedestal* free up more cockpit space?

**Answer:** The Steering Wheel wraps back around the Pedestal. Therefore the Wheel and the Pedestal share the same space instead of each taking up room. This allows the system to be positioned further aft taking up less room in the forward end of the cockpit. A major benefit in a Center Cockpit Sailing Yacht.

## Premiere Constellation System Benefit



***Premiere System***



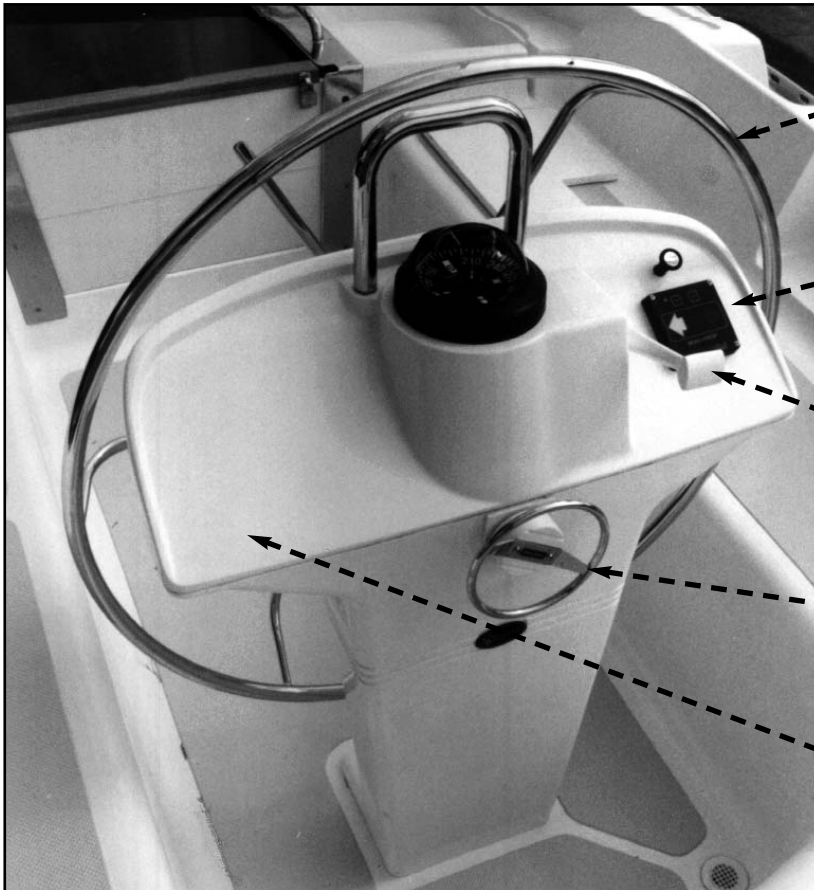
***Standard System***

# PRODUCT KNOWLEDGE INFORMATION SHEET

**Question:** What is a "Premiere Constellation Pedestal?"

**Answer:** A special pedestal with a front mounted wheel. By having the wheel front mounted, one can easily control the single lever engine control and operate the optional bow thruster without having to reach thru spokes of a wheel! Allowing you to turn the wheel and operate the controls at the same time. Especially useful during docking maneuvers.

## Premiere Constellation Pedestal



Front mounted wheel allows complete access to the all controls while turning wheel!

Optional bow thruster control can be easily worked.

Forward and reverse throttle control can be easily worked.

Large, easy to control wheel brake.

Instruments and compass mounted on pedestal can be viewed without wheel spokes obstructing vision.

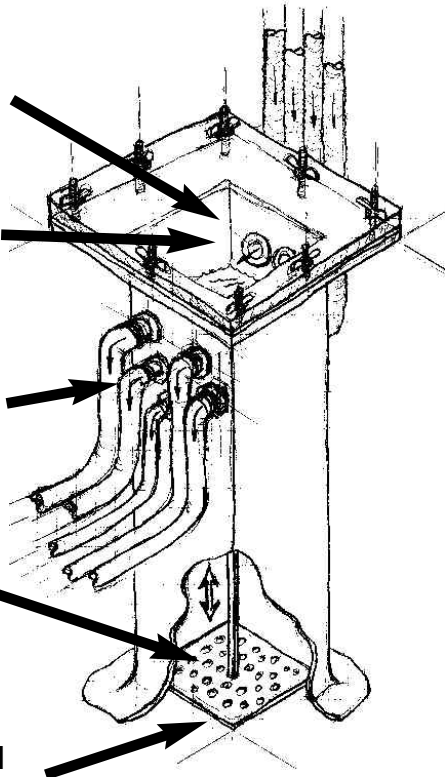
**Question:** What makes the *Caliber Safety Sea Chest™* so unique?

**Answer:** There are specific design features not found in other sea chests among them the ability to clear obstructions from inside the boat, a shut off system for the entire sea chest, and a see-thru inspection plate.

## Caliber Safety Sea Chest™

### Key Safety Features

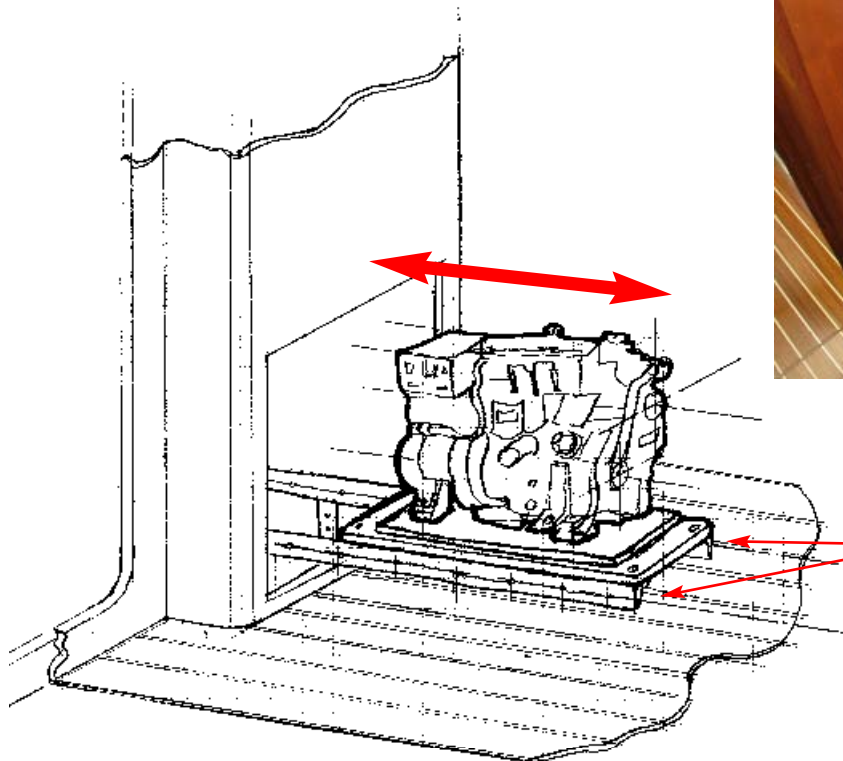
- ☆ Clear cover allows inspection of intake water flow while underway.
- ☆ Top level of sea chest is above load water-line.
- ☆ All below water t-hulls in central location for quick inspection.
- ☆ Removable intake strainer allows you to clear debris from inside the engine room!
- ☆ Sea chest can be shut off from inside the hull in case of emergency.



**Question:** How is it possible to make difficult generator access a thing of the past?

**Answer:** With a carefully designed system that allows a full-size generator to slide out of it's compartment for great accessibility.

## Easy Access Slide-out Generator



Heavy duty stainless steel tracks with special roller bearings to make sliding the generator in-out easy.